

PART ELEVATOR
EL 2001



EL 2001
meeting a new challenge!

July 08

C003eng/0

1. GENERAL ADVISORY WARNING

1.1 Copyright

This manual is the property of Bettinelli F.lli S.p.A..
Its reproduction or the transfer of its content to other parties is strictly forbidden.
All rights are reserved.

1.2 Reference guidelines and technical specifications

89/392/EEC Machine Provisions
93/68/EC Low voltage Provisions
ECI EN 60204-1 Machine electric equipment
The machine has been produced following GAMP provisions.

1.3 Customer responsibility

For correct installation of the elevator, please refer to the technical provisions listed in para. 1.2.
Starting and operation of the elevator should be well performed after the machine to which it will be installed has been declared compliant with the provisions listed in para 1.2.

ATTENTION: Electric voltage can cause electrocutions or burns. Disconnect and insulate the elevator from the energy source before working on the connections. Each operation must be executed by a "skilled" individual, having technical knowledge or sufficient experience, to avoid the dangers caused by electricity, as indicated in the European Rule EN 60204-1.
If safety rules are not followed and maintained serious injury to personnel and equipment damage can occur.

1.4 Indications for maintenance and service

To request maintenance service and to order specific spare parts, please contact:

Bettinelli F.lli S.p.A.
Via Leonardo da Vinci, 56
I-26010 Bagnolo Cremasco -CR-
Tel. +39 0373 237311 Fax. +39 0373 237538
www.cdsindexers.eu cds@bettinelli.it

2. DESCRIPTION AND FUNCTION OF EQUIPMENT

2.1 Description

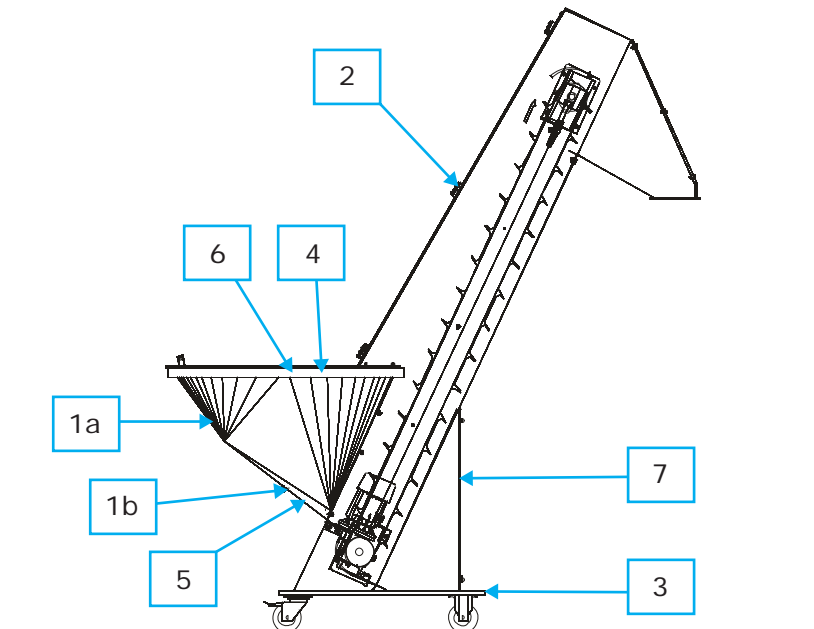
The part elevator EL 2001 has been designed to improve the flow of individual component presented for installation. In fact, excessive filling of the vibratory bowl, will cause the components to feed improperly. The elevator bowl, provides high loading performance (60 - 125 - 200 lts). The absence of sharp edges, ensures compliance with the requirements for operators safety during loading operations.

The EL 2001 is composed of the following parts:

- 1- a stainless steel bowl (a) having a rapid unloading window (b)
- 2- a stainless steel channel for components loading, provided with a window for cleaning
- 3- non-scratch steel support frame, painted in grey, with 4 wheels (two of which are pirouetting wheels and can be blocked)
- 4- conveyor guard protection when the cover is open

Optional:

- 2- Proximity switch on the window for cleaning
- 5- optical fibres to detect the storage of components
- 6- cover damper
- 7- safety Proximity switch on the back protection panel



2.2 Function of equipment

The pallet conveyor, which operates, in a clockwise direction by the motor, will carry the component parts from the bowl, which travel up in the channel. When the components arrive at the top of the elevator, they are placed inside the vibratory feeder.

3. TECHNICAL CHARACTERISTICS

The elevator dimensions are indicated on the attached drawing:

Feeding input voltage	400VoltA.C.Three-phase 50/60 Hz
Functioning temperature	From 10° to 40° C
Material	Stainless steel
Weight 60 lts, 125 lts, 200 lts	90 Kg, 100 Kg, 110 Kg

4. INSTALLATION

4.1 Storage

The elevator must be stored in a dry place.

4.2 Movement

Once you have removed the packaging, check the elevators condition.

Due to the pirouetting wheels, the EL 2001 can be easily placed near the machine, without using any additional mechanical means.

ATTENTION: Do not place anything on the elevator in order to prevent it from overturning. When you reach the right position, block the back wheels, to prevent the elevator from moving. Then, uncoil the electric connection cable coming from the motor.

4.3 Elevator installation

Once you have checked that the bowl is empty, connect the electric cables of the motor which activates the conveyor. The EL 2001 motor is provided with a three-phase cable for power supply and a grounding cable. These three cables must be connected to a plug which is compliant with EC rules. On request, the cable can be supplied with the plug chosen by the customer. After completing these operations, connect the plug into an electrical socket.

ATTENTION: Check if the input voltage and input frequency are compliant with what has been specified in the technical characteristics. Check if the motor runs clockwise. If it runs in the opposite direction, it can cause serious damage to the EL 2001. If the motor runs in the opposite counter clockwise direction, you must:

- disconnect the plug from the socket, so that the feeder can be electrically insulated
- remove the cover on the motor junction-box by turning and remove the screws.
- switch two of the junction-box cables (U, V, W), to which the line cable is connected; reinstall the cover
- connect the plug to the socket, checking if the conveyor rotates in the correct clockwise direction

4.4 Elevator disconnection

Disconnect the plug from the socket, in order to electrically insulate the elevator. Coil the cable and pack it up with care, paying particular attention to the plug.

Finally, secure the elevator to the base of the packaging.

5. FUNCTIONING

5.1 Loading components

For loading components follow the instructions below:

- Open the protection cover by means of the handle.
- Load the components into the bowl.
- Close the protection cover.

On request, the bowl can be provided with a sensor, mounted at the bottom of the bowl, which will detect the minimum level of components load.

5.2 Unloading components

For this operation, follow the instructions below:

- electrically insulate the elevator from the power source
- open the protection cover, loosening the blocking screw, and then remove the components inside the bowl
- after having removed all the components, close the cover, and turn the screw in
- connect the elevator to the power source

5.3 Use of different formats

The EL 2001 is a complimentary device suitable for numerous applications and processes in different fields and various industries. The wide pallets* allow the customer flexibility for the loading of many different shaped and sized parts.

5.4 Improper use

The EL 2001 has been designed to conform to the purposes described in point 2.1

Improper use of the elevator is not permitted. The bowl is provided with a protection cover which must be closed during the elevator operation.

6. MAINTENANCE

If used correctly, the EL 2001 will not need particular maintenance service, except for:

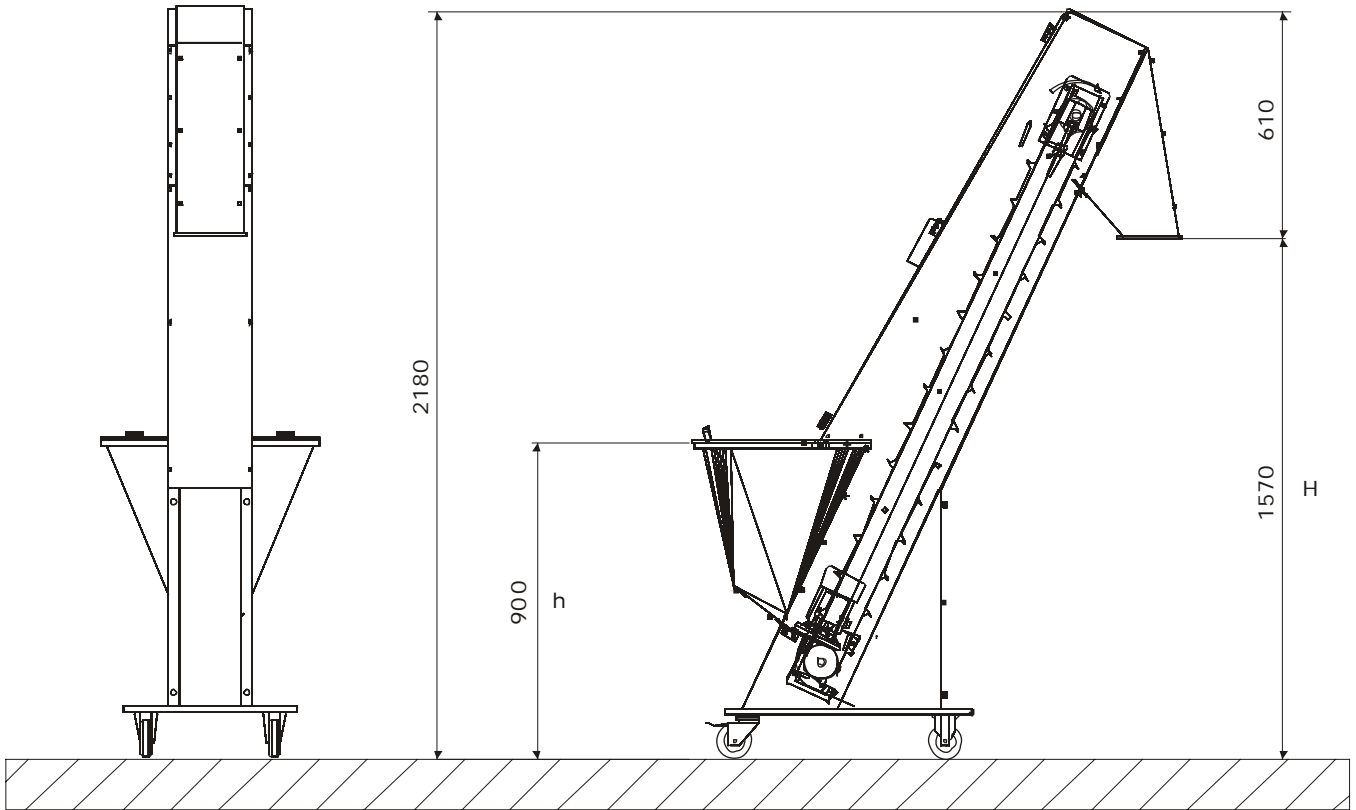
- periodical conveyor tension checks; regulate the two tie rods on the upper part of the elevator channel
- elevator cleaning; dust and foreign bodies removal. The frequency of this maintenance operation varies according to the working environment

ATTENTION: all the maintenance operations and service must be performed after having first disconnected the elevator main power supply.

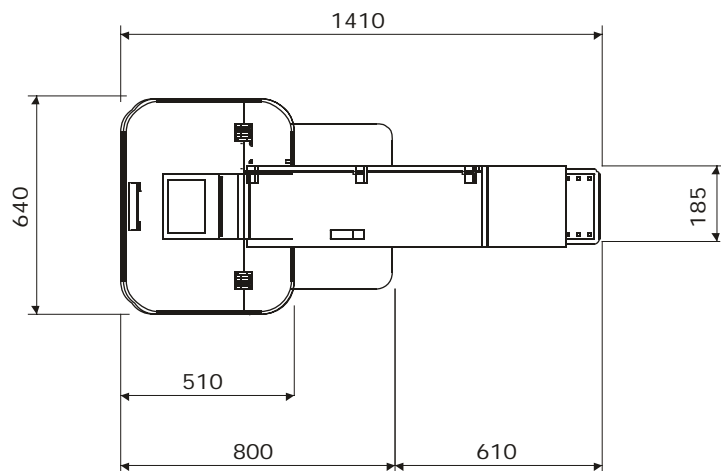
* 65 lts pallet 20 mm
125 lts pallet 30 mm
200 lts pallet 30 mm

PART ELEVATOR EL 2001

PALLETS ELEVATOR BOWL CAPACITY 60 LTS.

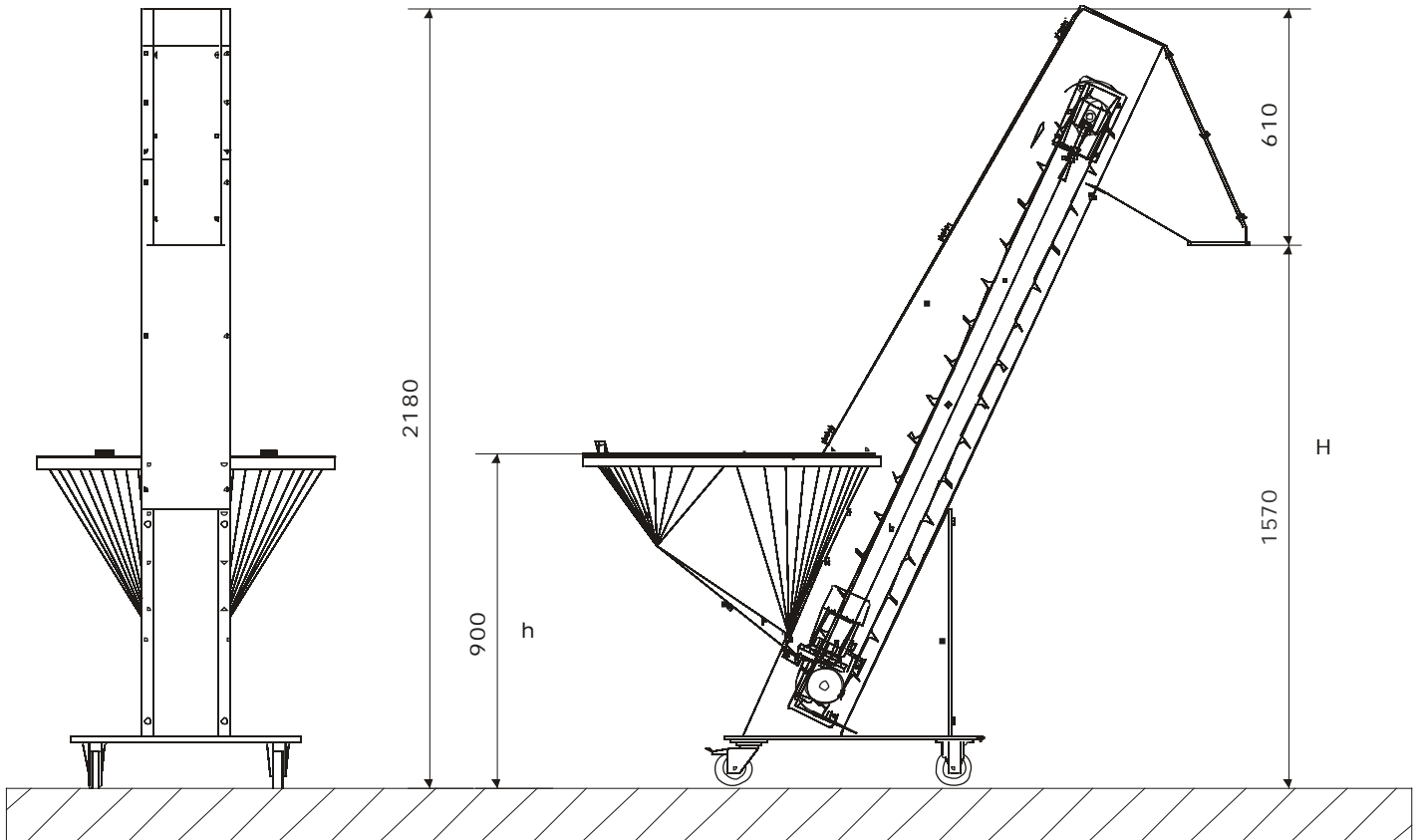


H = COMPONENTS EXIT HEIGHT
h = COMPONENTS LOADING HEIGHT

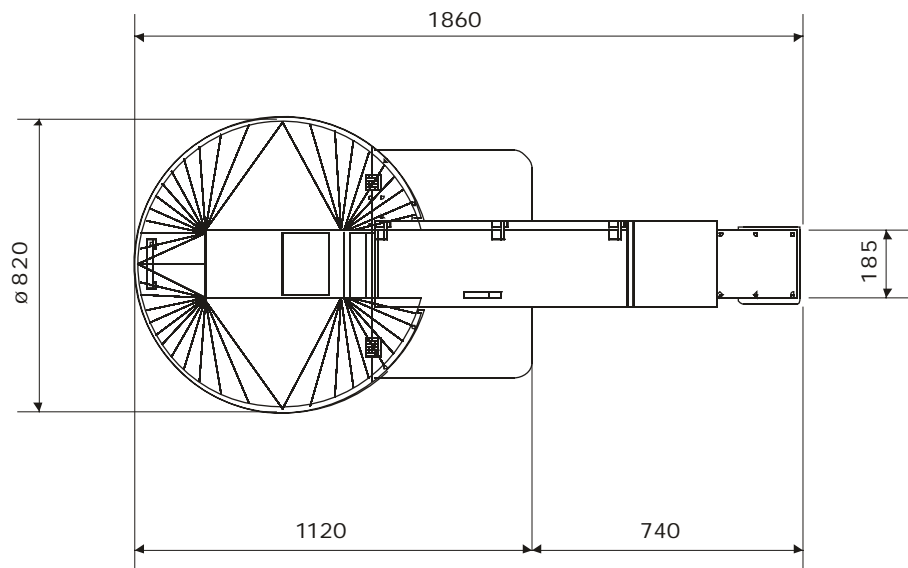


PART ELEVATOR EL 2001

PALLETS ELEVATOR BOWL CAPACITY 125 LTS.

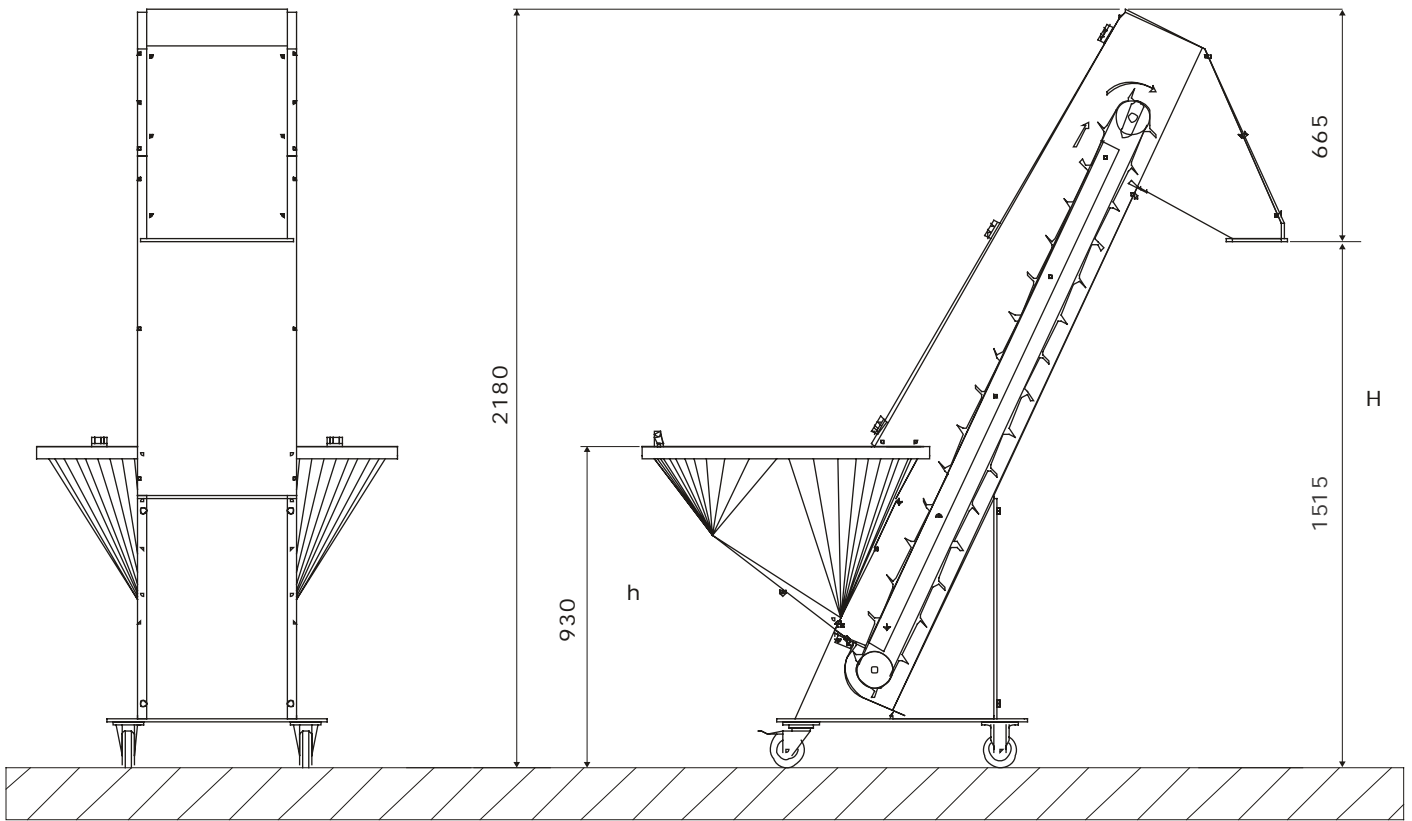


H = COMPONENTS EXIT HEIGHT
h = COMPONENTS LOADING HEIGHT

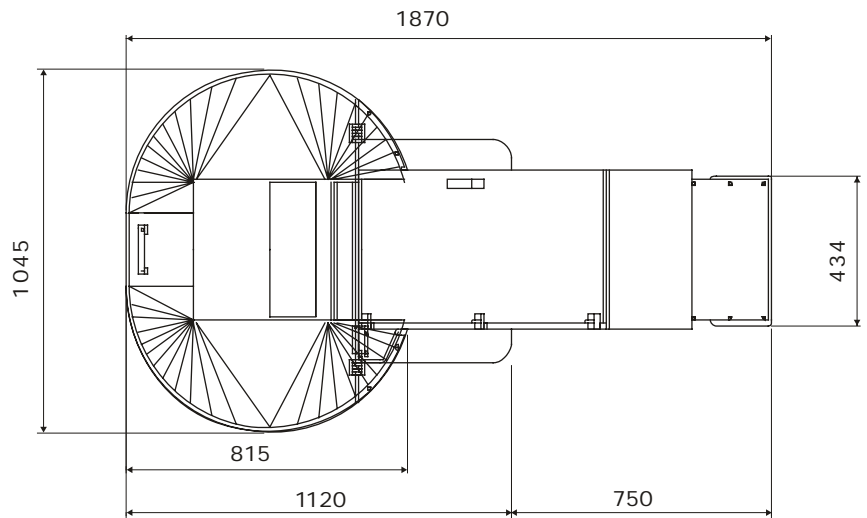


PART ELEVATOR EL 2001

PALLETS ELEVATOR BOWL CAPACITY 200 LTS.



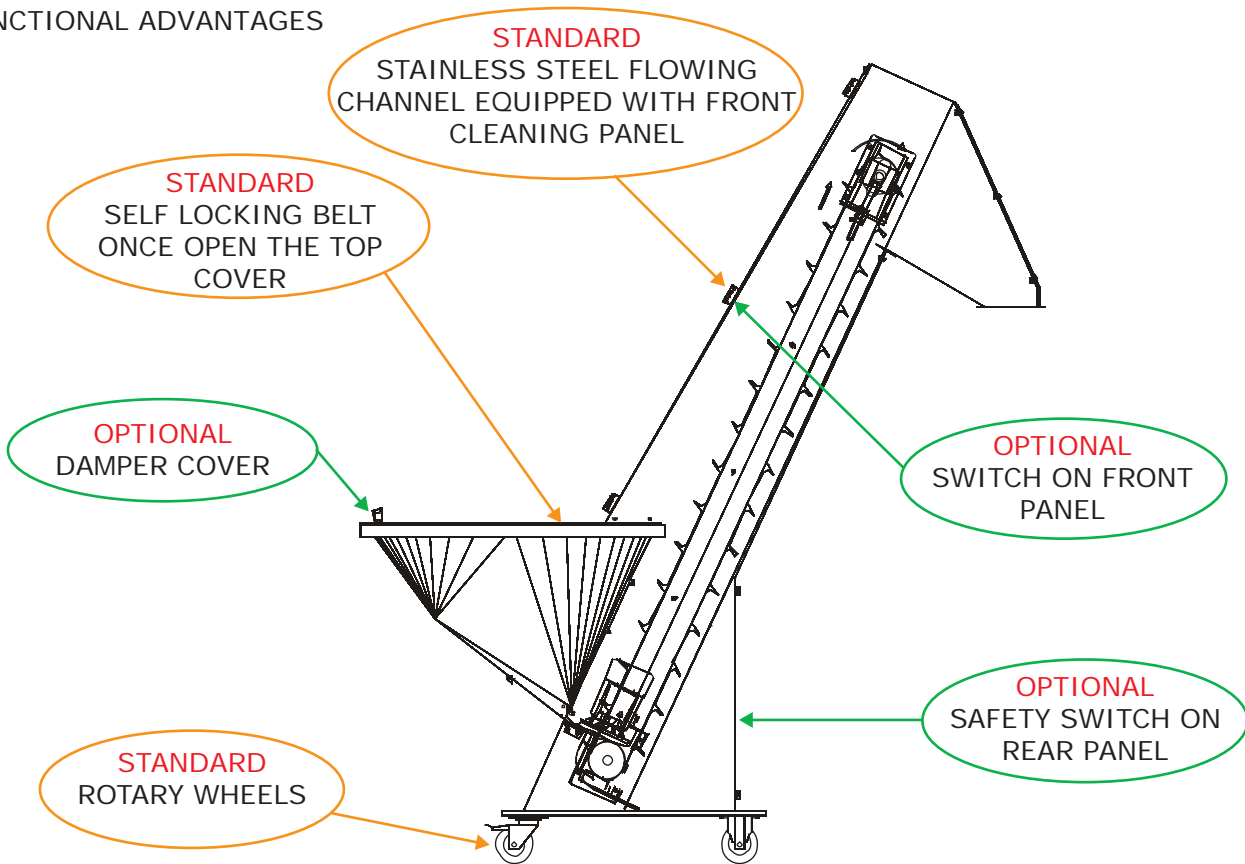
H = COMPONENTS EXIT HEIGHT
h = COMPONENTS LOADING HEIGHT



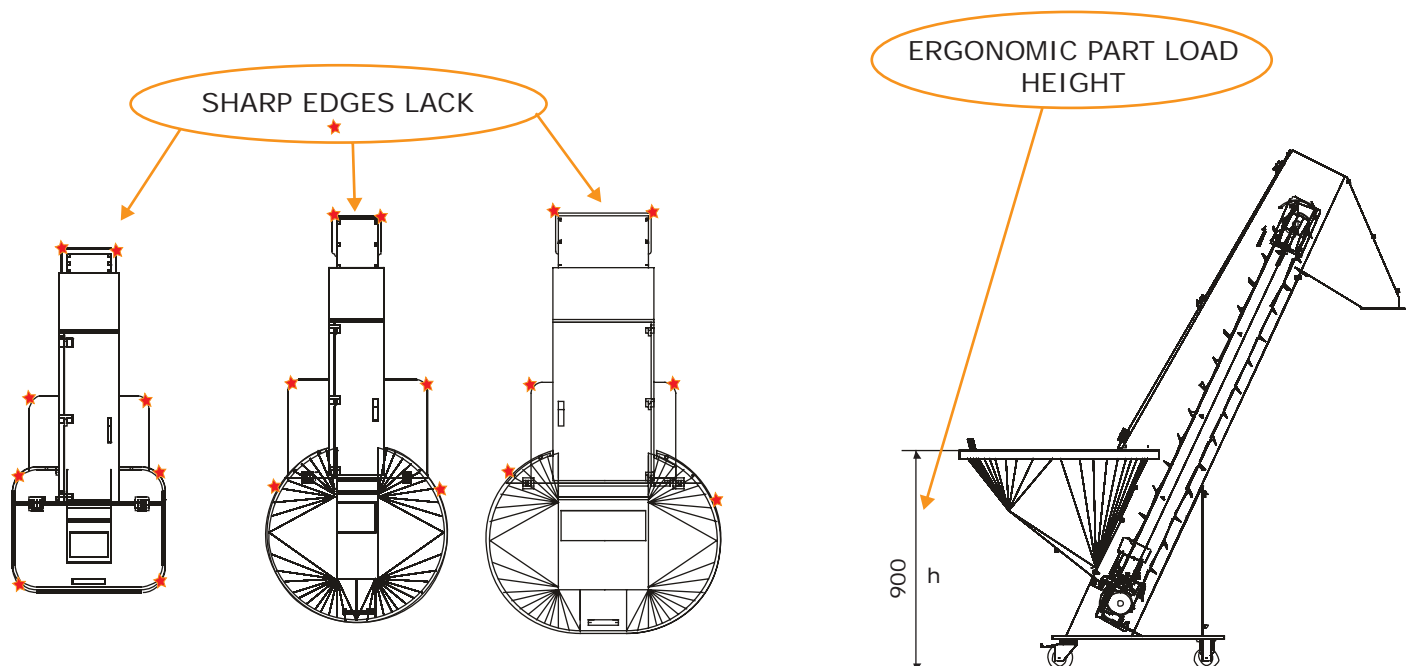
PART ELEVATOR EL 2001

COMPETITIVES ADVANTAGES

FUNCTIONAL ADVANTAGES



ERGONOMICS ADVANTAGES



PART ELEVATOR EL 2001

COMPETITIVES ADVANTAGES

In compliance with GAMP4 norms. Specifically designed for Medical, Pharmaceutical and Clean Room environments.

EL 2001
60 LT.



EL 2001
125 LT.



EL 2001
200 LT.





**Your Global Partner For
Cam Motion Technology**



HEAD OFFICE EU

CDS Cam Driven Systems
div. Bettinelli f.lli S.p.A.
Via Leonardo da Vinci n.56
26010 Bagnolo Cremasco (CR) – ITALY
Tel. +39 0373 237.311 Fx. +39 0373 237.538
cds@bettinelli.it www.cdsindexers.eu



U.S.A. – Corporate office

CDS Cam Driven Systems Corp.
27 Wilson Drive, Unit C – Sparta NJ 07871
Tel. +1 973 300 0090 Fx. +1 973 300 0061
info@cdsindexers.com www.cdsindexers.com



Germany - Corporate Office

CDS Cam Driven Systems GmbH
Ulrichstrasse, 9 – 86641 Rain am Lech
Tel. +49 (0) 9090 7057110 Fx. +49 (0) 9090 70571113
info@cdsindexers.de www.cdsindexers.de



India – Corporate office

Bettinelli Automation Components Pvt Ltd
Level 6, Pentagon P-2 - Magarpatta City Hadapsar - 411013 Pune
Ph. +91 20 4014 7821 Fax. +91 20 6628 0011
info@bettinelli.in www.cdsindexers.in